

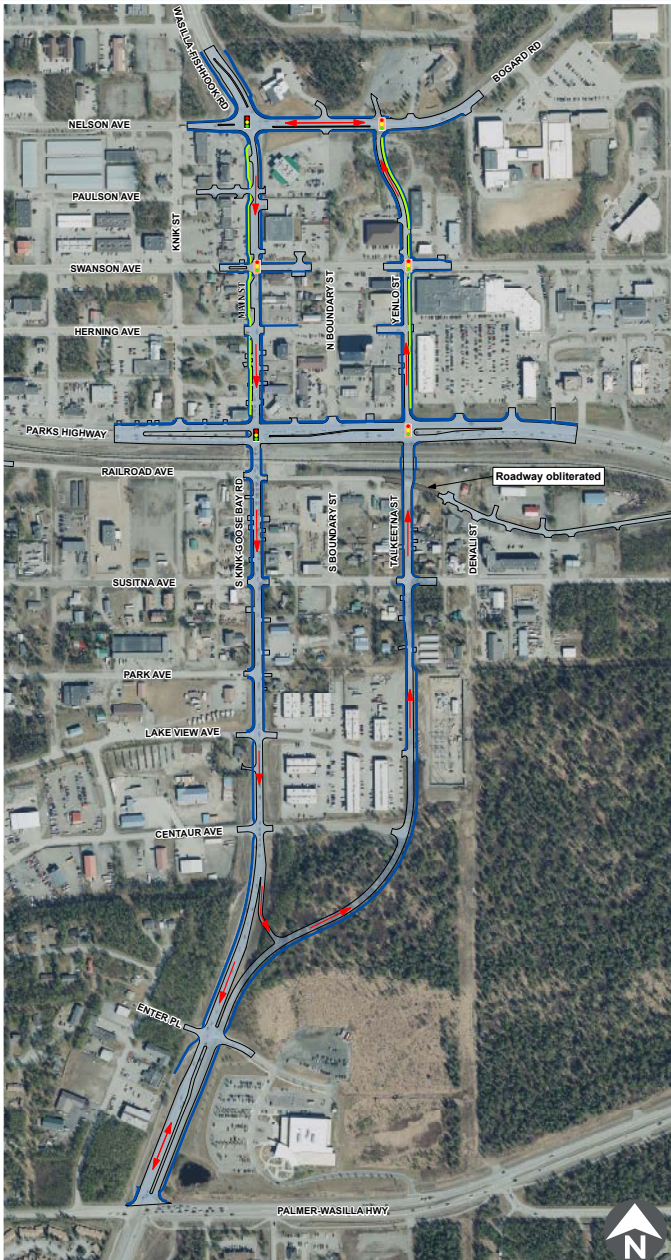
# Wasilla Main Street Rehabilitation Project Fact Sheet

AKSAS Project No: 60077



The Alaska Department of Transportation and Public Facilities (DOT&PF) in cooperation with FHWA proposes to improve mobility by reconstructing Main Street and nearby roadways in downtown Wasilla. The Wasilla Main Street Rehabilitation Project consists of improvements and traffic pattern changes to the Parks Highway, Main Street, Knik-Goose Bay (KGB) Road, Yenlo Street, and Talkeetna Street.

## Project Area Map



0 150 300 600  
Feet

### LEGEND

- Existing Signal
- Future Signal
- Curb/Edge of Pavement
- Traffic Direction
- Alaska Railroad
- Bike path
- Sidewalk
- Road Surface

WASILLA MAIN STREET REHABILITATION  
PROJECT AREA MAP  
PRELIMINARY DESIGN

## Project Purpose

The proposed project seeks to:

- » Improve travel efficiency
- » Reduce congestion
- » Enhance safety



Movement in this area is constrained by the Parks Highway and railroad corridors bisecting downtown Wasilla, which limits north-south connectivity. The purpose of this proposed project is to improve mobility for people and freight within the downtown core of Wasilla. The design team is currently working towards a 95% design that will include improvements to pedestrian and bike facilities and the roadway.

Since the environmental document was approved in late 2013, DOT&PF has completed "Plans-in-Hand" or 65% design and is moving ahead to complete the 95% design. We have begun the appraisal and acquisition process for right of way (ROW). The Wasilla Main Street Rehabilitation Project anticipates construction in the 2024-2026 timeframe.

## Why do we need to reconstruct?

Wasilla, Alaska is the most populous city in the Matanuska-Susitna Borough (MSB). As the community and surrounding areas have significantly grown, traffic congestion in the downtown core area has increased. Specifically, north-south connectivity has become a limiting factor for effective traffic movement in the area. There are also limited pedestrian facilities along Main Street, and the current intersection design at the Parks Highway, near an at-grade rail crossing, contributes to congestion and has a higher than average crash rate than similar intersections.

## Key Rehabilitation Project Features

- The project will establish a one-way couplet to improve north-south traffic flow and ease congestion in this busy corridor.
- An at-grade intersection will be constructed at the intersections of the Yenlo Street/Talkeetna Street corridor with the Parks Highway and the Alaska Railroad.
- Traffic signals (stoplights) will be installed and replaced along several intersections.
- Drainage facilities will be added or upgraded throughout the project area.
- Separate pedestrian and cyclist facilities will be added and existing amenities will be brought to current ADA standards.

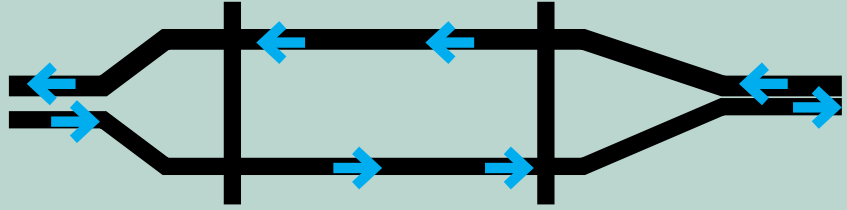
# Wasilla Main Street Rehabilitation Project Fact Sheet

AKSAS Project No: 60077



## What is a couplet?

A couplet is a pair of one-way parallel streets that carry traffic moving in opposite directions.

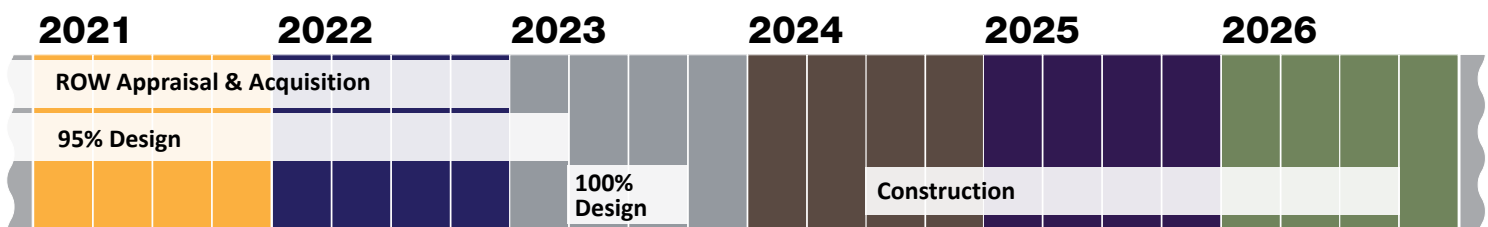


## Cost

The Wasilla Main Street Rehabilitation Project is estimated to cost approximately \$40 million (including design, Right-of-Way acquisition, utility relocation, and construction), and will use Federal and State funds. Cost estimates will be further refined as the project design is finalized.

## Schedule

This project team is working toward a 95% design and has started the ROW Phase. Once the design is finalized, construction is slated to begin in 2024 and is anticipated to take two to three years to complete.



## We Want to Hear From You!

DOT&PF wants to hear from you as we work towards a final design and prepare for construction. We will keep the public informed of project progress via newsletters, meetings, and by reaching out to affected stakeholders. To learn more about the project, sign up for the project e-mail list, or reach the design team, visit [www.wasillamainstreetproject.com](http://www.wasillamainstreetproject.com).

You may also contact the project team at [info@wasillamainstreetproject.com](mailto:info@wasillamainstreetproject.com), or by using the contact information provided below.



## Contact

**Kelly Summers, P.E.**  
DOT&PF Project Manager  
[Kelly.summers@alaska.gov](mailto:Kelly.summers@alaska.gov)  
907-269-0546

**Alice Rademacher**  
HDR Public Involvement  
[Alice.Rademacher@hdrinc.com](mailto:Alice.Rademacher@hdrinc.com)  
907-644-2006

*The environmental review, consultation, and other actions required by applicable Federal environmental laws for this project are being, or have been carried out by DOT&PF pursuant to 23 U.S.C. 327 and a Memorandum of Understanding dated November 3, 2017, and executed by FHWA and DOT&PF.*